

**KEE HING CHEUNG KEE CO., LTD.
DLFTZ CHANG HING KEE
INT'L INDUSTRY & TRADE CO., LTD.**



Nutritional Supplements

Hong Kong based **Kee Hing Cheung Kee Co.,Ltd.(KHCK)** , the developer and promoter of high quality natural bioactive ingredients which are extracted from pure natural resources and benefit human health. We committed to supplying high quality products for the global food, dietary supplement, cosmetic and pharmaceutical industries at a competitive price.

Base on that, we are also attaching importance to Chinese Traditional Patent Medicine, Natural medicine and Active natural pharmaceutical ingredient development. Until now, we have successfully produced Lignans(SDG) and other Chinese Traditional Patent Medicine functioned on Depression, Rheumatism, Prostate, Dermatitis, Women Menopause, Dysmenorrheal and etc..

Today, more and more people recognized health come from nature. KHCK designs products and services that are at the forefront of health care industry, and conducts fundamental research in fields important to human health. Guided by both experience and vision, KHCK is taking the lead in natural products research and development.

After three years researching and developing, we have established alliance with a number of top Chinese suppliers which includes over 10 co-operated factories and 3 bio- science development laboratories. With the production and technological supports by them, we have set up a vast and thorough products database and obtained cutting-edge product development capacity, therefore being confident to supply your company with most of product you would like.

We know that natural source without pollution is so important to guaranteeing the high quality. We are sourcing material from GAP planting base and natural plant from mountain to avoid pesticide residue and heavy metal residue etc.

Among so many strengths distinguish KHCK in market place, we have:

- Wide and stable supplier's network.
- Products support by more than 10 factories.
- The price competitiveness of Chinese products.
- The high quality products gauged by Hong Kong benchmark.
- Technological support by 3 bio- science development laboratories. Professional research and development.
- GAP planting base and abundant herbal resources without pollution.
- Products know-how and industry expertise.
- Customized service and speedy response to ensure our prompt feedback on your business demand.

Facing such rapidly changing global environment, KHCK focuses on customized products according to client requirements. If you would like to take advantage of the services that KHCK offer your company, please go to our web site at www.khck.net.

We strongly recommend following strength products:

Lignans, Myricetin, White Peony P.E., Aloe P.E., Kelp Polysaccharides, Seabuckthorn oil, Hemp oil, Flaxseed

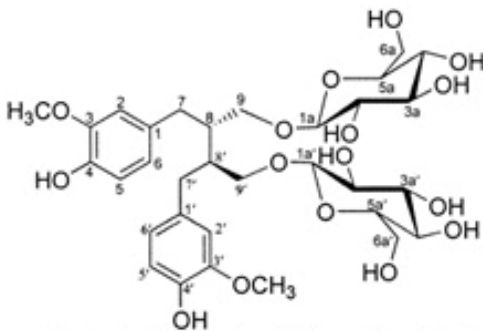
oil, Borage oil etc....

Lignans



“Wherever flaxseed becomes a regular food item among people, there will be better health”—Mahatma Gandhi

We can offer high quality concentrated flax hull lignans, containing large concentrations of Lignans (SDG). Lignans are a group of phytonutrients found in seeds and grains. Flaxseed is known for being the plant containing the highest concentration of Lignans known as SDG (secoisolariciresinol diglycoside).



1: Secoisolariciresinol diglycoside (SDG)

Most of the lignans in the flax seed are located in the hull that encased the seed. Our product contains only pure organic flax hulls, which have been mechanically separated from the flax seed. The resulting product is said to contain 70 times the amount of SDG lignans per gram as compared to the traditional ground up seed.

Studies have shown these SDG lignans to be effective in a variety of health complications. Much extensive study has been done on the effects of flax lignans on certain diseases such as Prostate cancer, Skin cancer, Melanoma, Diabetes, Lupus, and many more. Being Phytoestrogens, SDG lignans have also been reported to be effective in balancing hormone related problems in women. These have included breast tenderness, sweating, vaginal dryness, bloating, hot flashes and uneven menstrual cycles and PMS symptoms.

Benefits of using Flax Hulls (Lignans) include the following:

- Boost the body's immune system significantly;
- ED and EL mimic estrogen in the body and is the best natural HRT replacement for women in menopause;
- Overcome symptoms such as "Hot Flashes" often experienced by women going through menopause;
- Flax Hulls are the best natural substitute for estrogen for both men and women experiencing menopause;
- Reduce excessive free radical activity in the body;
- Flax Hulls provide the Daily Value (as recommended by FDA, USA) of Vitamin B12 in the form of

Cobalamin;

- Provide excellent dietary fibre;
- Helps with hair loss
- May help support treatment of HIV and AIDS especially in reducing viral infections;
- Flax Hulls may protect against or support treatment to breast cancer;
- Flax Hulls Lignans may protect against or support treatment to colon cancer;
- Flax Hulls Lignans may protect against or support treatment to bowel cancer;
- Flax Hulls Lignans may protect against or support treatment to prostate cancer;

Myricetin



Myricetin is one of the flavonols.

Myricetin benefit

Myricetin may have anti-inflammatory activity. In test tube studies, myricetin has shown anti-tumor and antioxidant properties. Myricetin may also inhibit beta-amyloid fibril formation, a key problem with Alzheimer's disease.

Kelp polysaccharide



Kelp polysaccharide against radiostrontium. A bright perspective of dietary compounds purposed for prevention and treatment of chronic lead poisoning. Alginate act directly on immune response being able to effectively stimulate proinflammatory activity, such to increase phagocytic activity. Improving diabetes in lowering blood glucose after postprandial serum insulin and plasma C-peptide. Protein release from alginate matrices.

PEOPLE SEARCHED KELP POLYSACCHARIDES (ALGINATE) FOUND MANY USED

In pharmaceutical, textile and paper printing, particular important used in food industry, new use discovery continuing. Stabilizing drinks, fruit juice and milk; Thickening & emulsification in salad, sauce, gravy, jam & canned foods; Hydration to keep roasted meat juice; bread, cake, ice topping, stuffing for better mouth feel; Pastry, noodles, vermicelli for reduced breakage. Holding crunchy in deep-fried; Gelling fruits, meats, and

seafood prevented air contamination for longer shelf life.

KELP POLYSACCHARIDES PROTECTING SKIN & HAIR FROM AIR POLLUTION

Exposure to environmental metal dust and lead remains a widespread problem in most industrialized countries. As pollutants in air, water and food are found at dangerously high levels from city to cities, it would damage our skin, hair and respirator

Hemp oil with none THC



Hemp seed oil is considered to be the best nutritional oil for health because its essential fatty acid (EFA) profile is closest to that required by the human body. Essential fatty acids are termed as such because the body cannot manufacture them. Therefore, they must continually be replenished in the diet. EFAs are not stored or used for energy as are other fats. Instead, they are used as raw materials for cell structure and as precursors for the synthesis of many of the body vital biochemicals, including hormones and prostaglandins.

Our Hemp oil with Low temperature cold pressing seeds' high quality edible oil unsaturated fatty acid list:

α -flax acid (Omega 3): 20%-27%

γ -flax acid (Omega 6): 0.8%-1.5%

linoleic acid (Omega 6):50%-60%

Oleic acid (Omega 9):10%-15%

Organic Flax Seed Oil with Lignans



Research has shown that majority of diets are deficient in Omega 3 essential fatty acids, and this can lead to some serious health problems:

Coronary heart disease - Omega 3 helps reduce cholesterol, blood pressure, plaque formation, and cardiac arrhythmia.

Arthritis - Studies have found that oils rich in Omega 3 (like flax seed oil) patients can reduce their drug use.

- Cancer - Omega 3 has been found to kill certain cancer cells without harming normal cells.
- Skin problems like acne, eczema, and psoriasis are shown partly to be related to Omega 3 deficiency.
- Omega 3 EFA helps improve your response to stress.

Our flax seed oil also contains lignans that have anti-viral, anti-bacterial, anti-fungal and anti-cancer properties. Flax seeds have the richest source of lignans, 100 times more than the next best source, wheat bran. Flax seed also contains lecithin which emulsifies fat and cholesterol. These little seeds improve digestion, help stabilize blood glucose levels, fight tumor formation and enhance cardiovascular health.

Borage Oil (Organic)



Borage oil is derived from the seeds of the borage plant (*Borago officinalis*), a member of the Boraginaceae family. Borage oil, also known as starflower oil and borage seed oil, is a rich source of the long-chain polyunsaturated fatty acid gamma-linolenic acid (GLA). The possible health benefits of borage oil are attributed to GLA. GLA is an unusual constituent of living matter and is found in very few plants. These include, in addition to borage, evening primrose, blackcurrant and hemp. The amount of GLA in borage oil, as the percentage of total fatty acid content, ranges from about 20% to 27%. Typical borage oil supplements contain approximately 24% GLA.

GLA is an all cis n-6 long-chain polyunsaturated fatty acid. It is comprised of 18 carbon atoms and three double bonds. GLA is also known as GLA; 18: 3n-6 and gamolenic acid. Chemically, it is known as 6, 9, 12-octadecatrienoic acid; (Z, Z, Z)-6, 9, 12-octadecatrienoic acid, and cis-6, cis-9, cis-12-octadecatrienoic acid. GLA is present in borage oil in the form of triglycerides. GLA is concentrated in the sn-2 position in the triglycerides. GLA has the following chemical structure:

Borage oil appears to be effective in some cases of rheumatoid arthritis and may be indicated in some other inflammatory disorders, such as Sjogren's syndrome and ulcerative colitis. Possible other indications include osteoporosis, diabetic neuropathy, acute respiratory distress syndrome (ARDS), hypertension and elevated serum lipids. Borage oil has been used with some preliminary success in some cancers, principally cerebral gliomas. It has not proved useful for tardive dyskinesia, premenstrual syndrome or menopausal flushing. It may be indicated in some cases for atopic dermatitis, particularly to help with itching, as well as for uremic skin conditions in hemodialysis patients. It should probably not be used in efforts to enhance immunity, as it may be immunosuppressive.

Green Tea Extract (Tea Polyphenol)



Specification:

Tea Polyphenol: 30% -- 98% According to Customer demand

Tea Catechins : 10% -- 90%

EGCG: 8% -- 90%

Packing:

Export Standard Packing.

≤5kg: aluminum foil bag

25kg: double layer aluminum bag (inner packing)

Fiberoard drum (outer packing)

Characteristics: Fine yellow brown-red powder with bitter taste.

Active Ingredient: Catechins.

Storage: Store in cool & dry place.

Keep away from strong light and heat.

Shelf life: Two years when properly stored.

Green tea is one of the largest beverages demanded by consumers worldwide. Used in China and India for its medicinal effects. There are several compounds extracted from green tea including catechins which contain an enormous amount of hydroxyphenols that are easily oxidized, congregated and contracted, which explains its good anti-oxidation effect. Its anti-oxidation effect is 25-100 times as strong as those of vitamin C and E. It is widely used in medicines, agriculture, and chemical and food industries.

This extract prevents cardio-vascular disease, lowers the risk of cancer, and decreases blood sugar and blood pressure, as well as viruses. In the food industry, the anti-oxidation agent used for preserving food and cooking oils.

Tea polyphenols is a kind of antioxidant with a natural excellence, since it has not toxic and side effects; accordingly it is one of the natural substances with the best free radical to clean body.

Feature:

Reduce blood fat to prevent from thrombus;

Treat heart / brain / blood diseases to decrease the incidence of the high blood pressure;

It has an anti-cancer effect in banting;

It has an evident effect in banting;

Delay the course of aging;

Restrain and cure the pathological changes of cranial nerve;
antireflective, improve the increase of blood cells and human's immunity function;
Promote the recovery of Graves' disease;
\Dispel toxin arising from heavy metals;
Antibacterial and is a bacterial killer to clear up odor of mouth, to protect and firm teeth.
Since tea polyphenols has a strong anti-oxidation function, it is an excellent fresh-keepi9ng prevent from the color-fading, bacterial, Vc oxidation for foods, which improves the stability of substances, widely used for upscale foods, health foods, and facial caring lotion etc.

Paeonia Lactiflora P.E.



Specification:

Total Paeoniflorin: $\geq 70\%$ HPLC

Glycoside: 90%

Packing:

Export Standard Packing.

$\leq 5\text{kg}$: aluminum foil bag

25kg: double layer aluminum bag (inner packing)

Fiberoard drum (outer packing)

Characteristics: Yellow brown powder

Storage: Store in cool & dry place.

Keep away from strong light and heat.

Shelf life: Two years when properly stored.

Paeonia lactiflora pall, a traditional Chinese herb, has been using to be an effective component of prescriptions for many diseases. The total glucosides of paeony (TGP) , a powder substance extracted from paeonia lactiflora pall root, is composed of paeoniflorin (90 %), hydroxypaeoniflorin, paeonin, and so on. The anti-inflammatory and immunoregulatory activities of TGP had been extensively proved in clinical for many years.

Milk Thistle P.E



Milk thistle is known for its stimulating effect on liver cells, improving the liver's functioning and stabilizing the cells and cell membranes. Effective in the treatment of chronic hepatitis, hepatargy, and cirrhosis
Milk thistle is known for its stimulating effect on liver cells, improving the liver's functioning and stabilizing the cells and cell membranes. Effective in the treatment of chronic hepatitis, hepatargy, and cirrhosis.

Specifications:

- 1) Appearance: light yellow powder
- 2) Arsenic: ≤ 2 ppm
- 3) Heavy metals: ≤ 10 ppm
- 4) Silymarin: $\geq 80\%$
- 5) Siybin: $\geq 30\%$
- 6) Silyfisnin: $\geq 3.0\%$
- 7) Silycrisnin: $\geq 25.5\%$
- 8) Isosilybin: $\geq 5.0\%$

Ginkgo Biloba P.E



Specification:

Ginkgo Bilbo Glycosides: $\geq 24\%$ 28% HPLC

Ginkgolides : $\geq 6\%$ 8% HPLC

Ginkgolic acid: ≤ 5 ppm 1ppm

Packing:

Export Standard Packing.

≤ 5 kg: aluminum foil bag

25kg: double layer aluminum bag (inner packing)

Fibernoard drum (outer packing)

Characteristics: Fine, light yellow brown to light brown color powder

Active Ingredient: Ginkgo Bilbo Glycosides
Ginkgolides

Storage: Store in cool & dry place.

Keep away from strong light and heat.

Shelf life: Two years when properly stored.

Principal specifications consist in low acidity (ginkgolic acid ≤ 5 ppm.1PPM) and water soluble GBE. The effective ingredients in the extract are flavones and terpenes. The preparations made of the extract have obvious effect on curing cardio-Cerebral vasecular diseases and respiratory disease such as coronary disease, angina pectoris, Cardiac infarction, cerebral coronary thrombembolia. Meanwhile, it is widely used as the

additive in health care products, foods, beverages and cosmetics etc.

Function:

Ginkgo Biloba is the world's longest living species of tree; individual trees live as long as 1,000 years.

The medical benefits of Ginkgo biloba extract (GBE) rely primarily on two terpene lactones. The 24% ginkgo flavone glycoside designation on GBE labels indicates the carefully measured balance of bioflavonoids. These bioflavonoids are primarily responsible for GBE's antioxidant activity and may mildly inhibit platelet aggregation (stickiness). These two actions may help GBE prevent circulatory diseases such as atherosclerosis and support the brain and central nervous system. The unique terpene lactone component ts found in GBE, known as ginkgolides and bilobalide, typically make up 6% of the extract. They are associated with increased circulation to the brain and other parts of the body as well as exert a protective action on nerve cells. Ginkgolides may improve circulatiuon and inhibit platelet-activation factor (PAF). Bilobalide protects the cells of the nervous system. Recent animal studies indicate the bilobalide may help regenerate damaged nerve cells.

Echinacea Herb P.E.



Specification:

polyphenol 4%

Packing:

Export Standard Packing.

≤5kg: aluminum foil bag

25kg: double layer aluminum bag (inner packing)

Fiberoard drum (outer packing)

Characteristics: Light yellow fine powder.

Storage: Store in cool & dry place.

Keep away from strong light and heat.

Shelf life: Two years when properly stored.

Part used : Root or leaves.

[Product Content] : Total polyphenol ≥ 4.0% ; chicoric acid ≥ 2.0% 。

[Plant Description] : A perennial, native to North America, Coneflower gets its common name from the arrangement of the florets of its showy, daisy-like flowers around a prominent center or "cone." Sturdy branching stems 2-5 ft tall with long, dark green leaves and showy daisy-like flowers up to 6-inches across, with drooping rays ranging from white to purplish pink. Dried roots is dark brown and taste sweet.

[Plant Resource] : Originated from the native America and exported to the European countries. It mainly distributed in the north of the America(westen Ohio). In China, it has been introduced as a kind of ornament in Beijing, Shanghai, Nanjing and other cities.

[Pharmacological Action] : Echinacea stimulates the body's immune system against all infectious and

inflammatory conditions, counteracts pus, and stimulates digestion. It specifically strengthens the immune system against pathogenic infection by stimulating phagocytosis, T-cell formation, and by inhibiting the hyaluronidase enzyme secreted by bacteria to effect the breakdown of cell walls and the formation of pus. It is one of the most powerful and effective remedies against all kinds of bacterial and viral infections.

[Health Benefits]

Echinacea increases the "non-specific" activity of the immune system. In other words, unlike a vaccine which is active only against a specific disease, echinacea stimulates the overall activity of the cells responsible for fighting all kinds of infection. Unlike antibiotics, which are directly lethal to bacteria, echinacea makes our own immune cells more efficient in attacking bacteria, viruses and abnormal cells, including cancer cells.

Echinacea, the purple coneflower, is the best known and researched herb for stimulating the immune system.

Pinebark extract



Botanical name: pinus massoniana .lamb

Part used : bark

Package: 25kg/drum

Description : brownish red power with fragrance ,tastes stringent

Proanthocyanidins: $\geq 95.0\%$

Particle size: 80mesh

Water solubility : soluble in water

Heavy metal: $\leq 10\text{ppm}$

Arsenic: $\leq 2\text{ppm}$

Sulfated ashes : ≤ 0.5

Total plate count: $\leq 1000\text{cfu/g}$

Molds and yeast: $\leq 100\text{cfu/g}$

E-Coli:Negative

Salmonella: Negative

Pinebark extract, polyphenols from pinebark, the principal active ingredients of which are low molecular polymers of proanthocyanidins which amounts to more than 95%,it is reddish brown powder, a kind of strong anti-oxidation agent, killing free radicals and absorbing UV radiation effectively used in dietary supplement health care products and cosmetics . With regard to health care, the natural anti-oxidation agent plays roles in three respects. Firstly, Anti-aging ;Secondly, It can treat cardiocerebrovascular diseases within human boby,. Thirdly, It can treat the chronic decline in neurosystem such as senile dementia effectively. Furthermore, It can prevent tumors and decrease the outburst of diabetes.

Bilberry extract



Bilberry is also commonly known as blueberries. This product is especially popular with European and American customers because of its rich nutritional value and particular effects. The principal ingredient, anthocyanidin, comes in extract amounts up to 25%. Traditionally, it is believed to benefit vision significantly, it also promotes porphyropsin regeneration that night vision needs. Besides, bilberry can improve agraphia resulting from visual illness and visual fatigue. Currently, bilberry extract is widely used in health care products concerning vision and the cardio-cerebral vascular system. Suitable for treating retinopathy, cataracts, glaucoma, yellow spot decline and hemorrhoidal pastille resulting from diabetes.

Specifications:

- 1) Botanical name: Bilberry (*Vaccinium myrtillus*)
- 2) Rate of extract: 4:1
- 3) Appearance: Purple powder
- 4) Loss on drying: $\leq 5.0\%$
- 5) Arsenic: $\leq 1\text{ppm}$
- 6) Heavy metals: $\leq 10\text{ppm}$
- 7) Assay (by HPLC): Anthocyanidins $\geq 25\%$



KHCK Plant Extract Product List

Code	Commodity	Specification
A		
PE01	5-HTP / Griffonia simplicifolia P.E.	50%-99% 5-Hydroxytryptophan (HPLC)
PE02	10-Deacetyl Baccation III	90~ 99.5% (HPLC)
PE03	Aconitin	90% (HPLC)
PE04	Adenophora Extract	5:1, 10:1
PE05	Agaricus Blazei P.E.	Polysaccharides 40% (UV)
PE06	Agrimony Extract	12:1
PE07	Aiye Leaf Extract	4:1
PE08	Akebia Caulis Extract	10:1
PE09	Alfalfa Extract	5% Total Flavonoids (UV-VIS)
PE10	Alisma Extract	20:1, 10:1, 4:1
PE11	Almond Extract	4:1
PE12	Aloe Vera P.E.	70 ~ 95% (HPLC) Aloin Barbaloin 50%, 95%
PE13	Althaea Rosae Root Extract	7:1
PE14	American Ginseng Root Extract	Ginsenoside 60~90% UV-VIS
PE15	Anemarrhenae Asphodeliodes Extract	4:1
PE16	Andrographis Paniculata P.E.	4 ~ 98% Andrographolide HPLC
PE17	Angelica Extract	1% Ligustilides (HPLC) 0.1% Ferulic Acid, 10:1
PE18	Angelicae Pubescentis Extract	4:1
PE19	Apigenin / Chamomile P.E.	98% (HPLC)
PE20	Apple Extract	Polyphenols 60% UV, 75-80% HPLC
PE21	Areca Seed P.E.	20:1
PE22	Artemisia annua L.(Wormwood) P.E.	99% HPLC
PE23	Artichoke Leaf P.E.	4:1
PE24	Asari / Wild Ginger Extract	10:1 4:1
PE25	Asiatic Cornelian Cherry Fruit	5:1
PE26	Asiatic Plantain P.E.	5:1, 10:1
PE27	Asparagus Root Extract	5% Asparagosides (HPLC), 10:1, 4:1
PE28	Astragalus / Bay Chi P.E.	0.2~0.4% Flavone & 16% Polysacchride 30 ~ 90% UV, Astragaloside IV 0.3 ~ 90%
B		
PE29	Baicalin	20%-98% (HPLC) CAS No.: 21967-41-9

Code	Commodity	Specification
PE30	Barbed Shullcap Herb P.E.	12:1
PE31	Barley Grass Juice Extract	20:1
PE32	Barley Grass Powder	Powder
PE33	Bamboo leave extract	Flavones 20%, 40% (UV)
PE34	Berberine Hydrochloride	CAS No.:141433-60-5
PE35	Beta-Carotene	1~98%
PE36	Betulin	98% HPLC
PE37	Betulinic acid	98% HPLC
PE38	Bilberry Extract	10~25% Anthocyanidins (UV)
PE39	Birch bark P.E.	Betulin 70-99% HPLC
PE40	Bitter apricot seed P.E.	14:1 Amygdalin 98%
PE41	Bitter Bukwheat extract	Flavones 50%
PE42	Bitter Melon P.E.	30:1, 60:1, 10% Charantin (HPLC) Total saponins 1~10%
PE43	Bitter Sophora Root Extract	90% Matrine (HPLC), 5:1
PE44	Black bean hull P.E.	Anthocyanidins 10%, 20%
PE45	Black Bean Peel Extract	15:1 (1% Antho-)
PE46	Blackberrylily rhizome P.E.	5:1
PE47	Black Cohosh P.E.	2.5 ~ 8% Triterpenoid saponins (HPLC)
PE48	Black Tea Extract	20 ~ 60% Polyphenols (China UV-VIS) 1.5 ~ 2.5% Theaflavin
PE49	Bletilla mannan	Polysaccharides >95%
PE50	Bluberry P.E.	Anthocyanidins 15~25% UV
PE51	Boewellia Sorrata Extract	65% Boewellie Acids
PE52	Broccoli P.E.	10:1
PE53	Bupleurum Root P.E	5% Bupleurum saikosaponins (HPLC,UV),5:1
PE54	Burdock Root P.E.	10:1,4:1 40% (HPLC)
PE55	Burdock Seed Extract	40% Arctiin & Arctigenin, 4:1
C		
PE56	Cabbage P.E.	12:1
PE57	Cactus P.E	20:1, 10:1
PE58	Camptothecin	98 ~ 99%
PE59	Capsicum P.E.	Capsaicin 5%
PE60	Cascara Sagrada Extract	4:1, 5:1, 10:1
PE61	Cassia Nomame P.E.	8 ~ 60% Dimer Flavan (UV-VIS)
PE62	Cassia Tora / Juemingzi Extract	10:1

Code	Commodity	Specification
PE63	Cat Nut Extract	4:1,8:1
PE64	Cat's Claw Extract	3 ~ 15% Alkaloids (HPLC)
PE65	Caulis Spatholobi Extract	20:1
PE66	Celandine Extract	2% Chelldonine (HPLC), 4:1, 10:1
PE67	Celery seed P.E.	5:1
PE68	Chamomile P.E.	5:1
PE69	Chastetre Berry P.E	0.5 ~ 5% Vitexin (HPLC) / 15:1, 4:1, 10:1
PE70	Chelerythrine	95%
PE71	Chicory Extract	Inulin 50~90% (HPLC)
PE72	Chinese Date P.E.	5 ~ 30% Polysacchraside, 5:1
PE73	Chinese gentian P.E.	8:1
PE74	Chinese-Glove Root P.E.	5:1, 10:1
PE75	Chinese Honey Locus Spine P.E.	5:1
PE76	Chinese Scholartree flower P.E.	99% Rutin
PE77	Chinese Taxillus Twig P.E.	5:1
PE78	Chinese thorowax root	6:1
PE79	Chitosan	90%
PE80	Chlorogenic Acid / Honeysuckle Flower P.E	15 ~98% Chlorogenic acid (UV-VIS), 7:1
PE81	Chrysanthemum Extract	6:1,10:1
PE82	Chrysin Extract	99% chrysin
PE83	Chuanxiong Rhizome P.E.	15:1
PE84	Cinnamon Extract	4:1, 20:1
PE85	Cinidium Extract	50 ~ 90% Osthole (HPLC)
PE86	Cistanche Deserticola P.E	10~40% (UV), Polyphenols 2:1 ~ 10:1
PE87	Citrus Aurantium P.E	4 ~ 95% Synepherin (HPLC) 90~98% Hesperidin 98% Naringin
PE88	Cloud Mushroom P.E.	Polysaccharides 30%, 50%
PE89	Cloves Extract	4:1
PE90	Cockcomb flower P.E.	14:1
PE91	Codonopsis Root Extract	4:1
PE92	Common Aucklandia Root P.E.	5:1
PE93	Common burred tuber P.E.	20:1
PE94	Common scouring rush herb P.E.	8:1
PE95	Common Smokertree P.E.	Fisetin 10-98%

PE96	Coptis Root (Golden Thread) P.E	5 ~ 15% Berberine (HPLC), 10:1
PE97	Cordyceps P.E	40% Cordyceptic Acid / Polysaccharides UV
Code	Commodity	Specification
PE98	Coriolus Mushroom P.E	10 ~ 40% Polysaccharides (UV), 10:1
PE99	Cornsilk (Job's Tears Extract) Extract	4:1
PE100	Cortex Cinnamomi Extract	Cortex Cinnamomi Flavonoids 10%, 5:1 Water-soluble polyphenol 50% 90%
PE101	Cortex Dictamnini P.E.	7:1
PE102	Cortex Phellodendri P.E / Amur cork-tree P.E	Berberine 12:1
PE103	Corus officinals	4:1
PE104	Corydalis Yanhusuo W.T.Wang Extract	80% Tetrahydropalmatine (HPLC), 4:1,25:1
PE105	Cranberry (Bilberry) Extract	4:1, 10:1, 5~25%
PE106	Cranesbill Extract	4:1
PE107	Cryptotanshinone Extract	Cryptotanshinone 20%
PE108	Curcumin	30 ~ 95% Curcuminoids (HPLC)
PE109	Curcuma longa linn.Extract	90 ~ 95% Curcumin
PE110	Cuscutae Seed (Dora) Extract	4:1, 10:1
PE111	Cyclovir obuxinum D	99%
PE112	Cytisine	98%
D		
PE113	Dahurian patrinia herb P.E.	15:1
PE114	Dahurian Rhodoendron Leaf Extract	50 ~ 70% Proanthocyanidins (UV-VIS)
PE115	Dandelion P.E	3 ~ 10% Flavonoids (HPLC), 4:1, 10:1
PE116	Dewdrop grass P.E.	40 ~ 95% B-ecdysone
PE117	Dihydroquercetin	90~95
PE118	Diosmin	CAS No.:520-27-4 EP5 (HPLC)
PE119	Dong Quai P.E (angelica) P.E	0.3%,1%HPLC
PE120	Dryopteris Extract	4:1
E		
PE121	Echinacea purpurea P.E	4% Phenolic Compounds (UV-VIS), 4:1
PE122	Elecampane Flower Extract	4:1
PE123	Elecampane Root Extract	4:1
PE124	Engelhardtia Leaf P.E	20% (HPLC)

PE125	Epimedium (Horny Goat Weed) P.E	5 ~ 50% Icarrin (HPLC)
PE126	Erigenron Breviscaprs P.E	25% Total flavone
PE127	Eucommia Bark Extract	20:1
PE128	Eucommia Leaves Extract	99% Chlorogenic Acid, 7:1, 10:1
Code	Commodity	Specification
PE129	Evodia Extract	10:1, 20:1 Evodiamine 5~30%
PE130	Eyebright Herb Extract	4:1
F		
PE131	Fennel Seed Extract	4:1, 5:1
PE132	Fenugreek Extract	4:1, 40% Hydroxyl-ILE
PE133	Fheafavin	15 ~ 60% (HPLC)
PE134	Figwort Root P.E.	5:1
PE135	Fineleaf schizonepeta herb P.E.	14:1
PE136	Fo-Ti Root P.E	2 ~ 10% Phosphatide (HPLC), 4:1, 12:1
PE137	Fragrant Solomonseal Rhizome P.E.	5:1
PE138	Fructus Forsythis P.E	12:1
G		
PE139	Garcinia Cambogia Fruit Extract	50% Hydroxycitric Acid
PE140	Garden burnet root P.E.	8:1
PE141	Garlic P.E	1 ~ 2% Allicin (HPLC)
PE142	Gastrodia Rhizoma Extract	20:1
PE143	Galanthamine Hydrobromide / Lycoris Radiata Extract	99% Galanthamine (HPLC) Galanthamine Hbr98% / Lycoramine HBr98%
PE144	Geniposide (Jasminoidin)	40 ~ 80%
PE145	Genistein	95~98% (HPLC)
PE146	Gentian Root Extract	5% Gentiopicrosid (HPLC), 4:1
PE147	Gentrin Knotweed P.E	20%,50%,98% (HPLC)
PE148	Ginger Root P.E	5% Gingerols (HPLC), 8:1
PE149	Ginkgo Biloba P.E	Total Ginkgo Flavone Glycosides 28%, Total terpene lactones 6% HPLC Ginkgo acid <1, 5PPM
PE150	Ginseng Root (American) Extract	80% Ginsenosides (UV-VIS)
PE151	Ginseng (Panax) Extract	10 ~ 80% Ginsenosides (UV-VIS)
PE152	Ginseng Root P.E	10%,20%,80% Ginsenosides (UV), 4:1
PE153	Glycyrrhiza Extract	Glycyrrhizic Acid

PE154	Golden Rod Extract	5% Flavonoids (HPLC), 5:1
PE155	Golden Seal Root Extract	5 ~ 10% Alkaloids (HPLC)
PE156	Glossy Privet Fruit P.E	10:1
PE157	Gossypol Acetate	98%
PE158	Gotu Kola P.E	10 ~ 80% Triterpenes (HPLC)
Code	Commodity	Specification
PE159	Grape seed P.E	60 ~ 95% Proantocyanidins (UV-VIS)
PE160	Grape Hull Extract	80% Polyphenols (UV-VIS) 5% Resveratrol (UV) Anthocyanidins 10% 25%
PE161	Green tangerine peel P.E.	6:1
PE162	Green Tea Extract	30 ~ 98% Tea Polyphenol (HPLC) 10 ~ 90% Tea Catechins (HPLC)
PE163	Gromwell Root P.E.	30% Shikonin
PE164	Guarana Seed Extract (Pure)	10 ~ 22% Caffeine (HPLC)
PE165	Guarana Seed Extract (Blending)	10 ~ 36% Caffeine (HPLC)
PE166	Gymnema Extract	4:1, 25% Gymnemic Acids (UV-VIS)
PE167	Gynostemma P.E	20 ~ 90% Gypenosides (HPLC)
H		
PE168	Hairyvein agrimonia herb P.E.	
PE169	Hawthorn Berry P.E	3% Vitexins (HPLC), 4:1, 7:1
PE170	Hawthorn Leaf P.E	2~8% Hyperosides (HPLC) Total Flavonal 60%
PE171	Hedyotis Diffusa Extract	12:1
PE172	Hesperetin	Bioflavonoid 10~95%
PE173	Hesperidin	CAS No.:520-26-3 80%-98% (HPLC)
PE174	Hibiscus Flower Extract	1% Anthocyanidins (UV-VIS), 4:1
PE175	Himalayan Teasel root P.E.	5:1
PE176	Honey Suckle Stem Extract	10:1
PE177	Hops Flower Extract	0.35% Flavonoids as Rutosid (HPLC), 10:1
PE178	Horse Chest Nut P.E	20% Aesbin (UV-VIS)
PE179	Horsetail P.E	2 ~ 7% Silica (Atomic Absorption)
PE180	Houttuynia Extract	10:1
PE181	Huperzine-A	1 ~ 99% (HPLC)
PE182	Hydrangea Root Extract	4:1
I		
PE183	Illiciumverumhook P.E.	Shikimic acid 98%

PE184	Indian Bread P.E.	50% Polysaccharides UV
PE185	Indian Chrysanthemum flower P.E	10:1
PE186	Inositol	CAS NO.:87-89-8
PE187	Inositol Nicotinate	CAS NO.:6556-11-2
PE188	Inula racemosa Extract	0.2% Alkaloids
PE189	Isatis indigotica fort Extract	60% Indirum, 10:1
Code	Commodity	Specification
PE190	Ivy P.E.	1%, 5%, 10%, 15% Hederacosid C (HPLC)
J		
PE191	Jasmin Flower Extract	5:1, 10:1
PE192	Jaw Ear P.E. / Black Mushroom Extract Powder	20% Polysaccharides
PE193	Jujuba P.E.	Jujubaside 2~10%
K		
PE194	Kava Extract	30~50% Kavalactones (HPLC)
PE195	Kola Nut Extract	10 ~ 22% Caffeine (HPLC)
PE196	Konjac glucomannan	Dry glucomannan 95%
L		
PE197	Largehead AtracrylodesRhizomep P.E.	5:1
PE198	Ledebouriella P.E.	6:1
PE199	Leek Seed P.E.	5:1
PE200	Lemon P.E.	50% Flavones (UV)
PE201	Lemon Balm P.E.	5:1
PE202	Lespedeza Cuneata P.E	98%
PE203	Levodopa	Levodopa 10%, 20%, 30%.
PE204	Lfalfa P.E.	Saponins 5~20% (HPLC)
PE205	Licorice Root Extract	10 ~ 26% Glycyrrhizic Acid (HPLC)
PE206	Lightyellow sophora root P.E.	Kushenols 95~98%, 10:1
PE207	Lignans (SDG)	20%,30%,40%,60%,80%
PE208	Ligusticum Extract	10:1
PE209	Ligustrum Extract	20% OLE – Acid, 10:1
PE210	Lily Bulb Extract	5:1
PE211	Limonin	90% (HPLC)
PE212	Lnula flower P.E	12:1
PE213	Lobelia Intiata Extract	4:1
PE214	Loeanolic acid	98% Oleanolic acid (UV-VIS)

PE215	Longan Aril extract	4:1
PE216	Longstamen onion bulb P.E.	5:1
PE217	Loquat Leaf P.E	2% (HPLC), 15:1
PE218	Lotus Leaf P.E	20:1, 10% HPLC
PE219	Lovage Extract	4:1, 6:1
PE220	L-Rhamnegin	99%
PE221	L-Theanine	95% (HPLC)
Code	Commodity	Specification
PE222	L-Tyrosine	98%
PE223	Lutein	50%
PE224	Lycium Extract	15%,25%,50% Polysaccharides (UV)
PE225	Lycopene	
PE226	Lycoris radiata Herb Extract	98% Galanthamine (HPLC)
M		
PE227	Macleaya cordata Extract	35% Sanguinarine (HPLC)
PE228	Magnolia Bark P.E	2 ~ 98% Honokiol (HPLC)
PE229	Maitake Mushroom P.E	15 ~ 30% Polysaccharides (UV-VIS)
PE230	Malva Verticillata Extract	4:1
PE231	Mangiferin	Mangiferin 80%, 90%
PE232	Matrine	98%
PE233	Marigold Flower P.E	6%, 10%, 20% UV
	Potmarigold Calendula P.E	
PE234	Medicago Extract	10% Coumestrol
PE235	Milk Thistle P.E	99% Silymarin (HPLC) 80% Water soluble
PE236	Momordia Fruit (Luo Han Guo) P.E	80% Mogrosides, 25% Mogroside, 12:1
PE237	Morinda Root Extract	4:1
PE238	Motherwort P.E	5:1, 10:1, 20:1
PE239	Moutan Black Extract	10:1, 20:1
PE240	Mucuna Extract	10% L-Dopa (HPLC), 20:1
PE241	Mulberry Leaf Extract	10:1
PE242	Mulberry Berry Extract	Anthocyanidins 5~15% UV, 4:1
PE243	Mustard Seed Extract	5:1, 10:1, 20:1
PE244	Myricetin	90%, 98%
N		
PE245	Nardostachytis Extract	10:1
PE246	Nettle Leaf or Root P.E	1% Silic Acid (HPLC), 4:1

PE247	Notoginseng Root P.E	10%,30%HPLC
PE248	Notoginseng Leaf Extract	80% Notoginsenosides (HPLC), 4:1
PE249	Notopterygium Root Extract	12:1
PE250	Nuphar Pumilum Root Extract	12:1
PE251	Nutgrass galingale rhizome P.E.	4:1, 20:1
O		
PE252	Oat Straw Extract	10:1 Polysaccharide 70%
Code	Commodity	Specification
PE253	Ocimum Sanctum Extract	0.2% Alkaloids (HPLC)
PE254	Oleanolic Acid	
PE255	Onion P.E.	12:1
PE256	Oolong Tea Extract	30 ~ 90% Polyphenols (UV-VIS)
PE257	Orange P.E.	60% Flavones (UV)
PE258	Oridonin	95%
PE259	Ophiopogonis Extract	20:1, 5:1
P		
PE260	Paclitaxel	1.0~99% (HPLC) CAS NO.: 33069-62-4
PE261	Paeonia lactiflora Extract	4:1, 10:1, 90% Glycoside
PE262	Paeonol	10 ~ 98% (HPLC)
PE263	Passion Flower Extract	4:1 Total Flavones 4%
PE264	Peanut shell P.E. / Luteolin	Luteolin 70-99% (HPLC)
PE265	Penony bark P.E	Paeonia Suffruticosa 99%
PE266	Peppermint Herb P.E	4:1, 8:1, 20:1
PE267	Perilla stem P.E.	20:1
PE268	Phellinus igniarius P.E.	Polysacchrides 5%
PE269	Phloretin	98% (HPLC)
PE270	Phoridzin	98% (HPLC)
PE271	Phyllanthus emblica Extract	35% Polyphenlos (UV-VIS)
PE272	Pichroafebrifuga	5 ~ 95% Febrifugine
PE273	Pine Bark P.E	80%,95% Proanthocyanidins (UV-VIS)
PE274	Pinelliae Extract	4:1, 7:1
PE275	Piper nigrum Extract	10% Piperine
PE276	Piperine	95% (HPLC)
PE277	Plantago Herb Extract	10:1
PE278	Plantago Seed Extract	4:1
PE279	Platycodon Root P.E	10%, 20% (UV)

	Radix Platycodi Extract	4:1, 8:1
PE280	Plumepoppy Extract	10 ~ 50% Total Alkaloids
PE281	Podophyllotoxin	95% (HPLC) 98% (UV)
PE282	Policosanol (Octacosanol)	90%
PE283	Polygoni Multiflori Root Extract	60% Polygonum multiflorum stilbeneglycoside
PE284	Pomegranate P.E.	Ellagic Acid 40% 90% (HPLC)
PE285	Pomegranate Hull P.E	2 ~ 40% (HPLC) Ellagic Acid
Code	Commodity	Specification
PE286	Pomegranate Seed P.E.	Polyphenols 40% UV
PE287	Poncirus Extract	4:1, 10:1
PE288	Poria Cocos Extract	4:1 ~ 20:1, 10% Polysacchorides (UV-VIS)
PE289	Pruple Perilla Extract	Scareolide, Sclareol 95%
PE290	Pubescent Holly Root P.E.	5:1
PE291	Pueraria / Kudzu Root P.E	40 ~ 95% Isoflavones (HPLC)
PE292	Pu Erh Tea Extract	15 ~ 30% Polyphenols (UV-VIS)
PE293	Purslane Herb P.E / Portulaca oleracea Extract	10:1 Flavonoids 5%
PE294	Pueraria Flower Extract	8:1
PE295	Pumpkin Seed Extract	4:1, 10:1
PE296	Pygeum Africanum Extract	25% Phytosterols
Q		
PE297	Quecitrin	98% (HPLC)
PE298	Quercetin	98% Quercetin (UV), CAS NO.: 6151-25-3
R		
PE299	Rabdosia Japonica Hara Extract	60% Diterpene
PE300	Radix Bupleuri	Saikosaponin A 0.5%
PE301	Radix Glehniae P.E.	5:1
PE302	Radix Lsatidis P.E	10:1
PE303	Radix Nototginseng P.E.	Notoginsenosides 80~95% UV
PE304	Radix Ophiopogonis P.E	Radix Ophiopogonis amylase 60%, 5:1
PE305	Radix Stemonae Extract	4:1, 10:1
PE306	Raspberry Extract	4% Raspberry ketone (HPLC), 4:1, 12:1
PE307	Rauwolfia serpentine Extract	4:1
PE308	Red Clover (Trifolium pretense L.) P.E	2.5 ~ 60% Isoflavones (HPLC)
PE309	Red Ginseng Extract	Ginsenoside 60~90%
PE310	Red Peony Extract	12:1, Paeoniflorin 40%

PE311	Red Rice Yeast Extract	0.5 ~ 1.5% Lovastatin (HPLC) Monacolin K 4.0-30.0 mg/g, Water-solubilit
PE312	Red wine extract	Polyphenols 30% GAE Eanthocyanins color value 12 UV
PE313	Rehmannia Root P.E.	5:1
PE314	Rehmannia (Cooked) Extract	4:1, 6:1
PE315	Reishi Mushroom P.E	4:1, 10 ~ 30% Polysacchrides
PE316	Resveratrol / Giant Knotweed P.E	10 ~ 99% Resveratrol (HPLC) Polydatin
Code	Commodity	Specification
PE317	Rhein	98%, 99%
PE318	Rhizoma Atractylodis P.E.	5:1
PE319	Rhizoma Drynaria Extract	10:1
PE320	Rhizoma Cibotii Extract	4:1
PE321	Rhizoma Rhei Extract	30:1
PE322	Rhodiola Rosea P.E	40 ~ 50% Polyphenols, 1 ~ 3% Salisorosides
PE323	Rhubarb Root Extract	9% Anthaquinone (HPLC), 4:1, 10:1
PE324	Rosa Roxburghii P.E.	5 ~ 7% Vitamin (UV)
PE325	Rose P.E.	10:1
PE326	Rosehips Extract	5% Ascorbic Acid, 4:1, 5:1
PE327	Rosemary P.E	6 ~ 25% Carnosic Acid (UV-VIS), Carnosic Acid 20%, 4:1,5:1
PE328	Rutin	CAS NO.: 153-18-4
S		
PE329	Salvianolic Acid B	
PE330	Salvia Root P.E	80% Total Phenolic acid HPLC
PE331	Sanguinarine	
PE332	Sarcandra Glabra Extract	20% Flavones (UV)
PE333	Sarsaparilla Root Extract	4:1
PE334	Saw Palmetto Berry Extract	25-90% Fatty Acids & Sterols (GC),4:1
PE335	Schisandra Berry P.E	2-9% Schisandrins (HPLC),4:1,10:1
PE336	Scopolamine butylbromide	
PE337	Scutellaria Root Extract	10:1
PE338	Scutellaria baicalensis Gorgi. Extract	80-95% Baicalin (HPLC),4:1
PE339	Scutellarein	98%
PE340	Seabuchthorn P.E.	10-50% UV

PE341	Semen aesculi / Sodium aescinate	98% Sodium aescinate
PE342	Semen Coiois Extract	15:1
PE343	Semen Cuscutae Extract	5:1
PE344	Senna Leaf Extract	4~8% Sennosides (HPLC),4:1
PE345	Shavegrass Extract	2% Silica (Atomic Absorption)
PE346	Shiitake Mushroom Extract	6~25% Polysaccrariades (UV-VIS),4:1
PE347	Shikimic Acid	98%
PE348	Siberian Ginseng P.E	0.8 ~ 95% Eleutherosides B + E (HPLC)
PE349	Siberian Milkwort	4:1
PE350	Sida cordifolia Extract	1.7% Alkaloids (HPLC)
Code	Commodity	Specification
PE351	Siler Extract	4:1,12:1
PE352	Sinomenine	98%
PE353	Slenderstyle acanthopanax bark P.E.	10:1
PE354	Smoketree P.E.	Fisetin 5%;50% 90% (HPLC)
PE355	Solanesol	90 ~ 95% (HPLC)
PE356	Solomonseal rhizome P.E.	7:1
PE357	Songaria Cynomorium Herb P.E.	10:1
PE358	Soybean P.E	10 ~ 90% Soy Isoflavones (HPLC)
PE359	Soybean Lecithin	
PE360	Spirulina Powder	60% Protein (UV-VIS)
PE361	Stephania cepharantha Hayata Extract	80% Total Alkaloids
PE362	Stevia Rebaudiana Extract	80~90% Steviosides (No Bitter Taste)
PE363	St John's Wort P.E	0.3 ~25% Hypericins (UV-VIS/HPLC)
PE364	Sugar Cane Wax Extract	Policosanol 12~90%
PE365	Sunflower Extract	5:1 (100% Water Soluble)
PE366	Szechwan Lovage Rhizome / Chuanxiong P.E	10:1
T		
PE367	Tanshinone IIA	20~99%
PE368	Tea Saponin	60% Saponin (HPLC)
PE369	Teasel Root Extract	8:1
PE370	Terminalia bellerica Extract	60% Tannins (UV-VIS)
PE371	Terminalia chebula Extract	40% Tannins (UV-VIS)
PE372	Theaflavins	10~60% Theaflavins (HPLC)
PE373	Thyme Extract	4:1, 5:1

PE374	Tangeretin	98%
PE375	Tomato Extract	6% Lycopene (HPLC)
PE376	Touchi Extract Powder	10% Polysacchrides
PE377	Tribula Terrestris P.E.	40~70% Saponins 10~20% Franosterols
PE378	Tribulus Terrestris Extract	20~40% Tribulus Saponins (HPLC)
PE379	Troxeutin	CAS NO.: 7085-55-4 Oral60%/Injection80% DAB1999
PE380	Turmeric Root Extract	30~95% Curcuminoids
U		
PE381	Ursolic Acid	98% (HPLC)
Code	Commodity	Specification
PE382	Usnea Dasypoga Extract	98% Usnic acid 90% Usnic acid sodium salt
PE383	Uva Ursi Leaf (Xiong Guo) Extract	20% Arbutine,4:1
V		
PE384	Valerian Root Extract	0.8% Valerianic Acid,5:1,10:1
PE385	Vitex/Chasteberry Extract	5% Vitexin (HPLC),4:1,10:1
W		
PE386	Wall-broken Ganoderma lucidum spore	99%
PE387	Wheat Grass Extract	4:1
PE388	White Atractrylodes Extract	4:1,10:1
PE389	White Kidney Bean P.E.	A-amylase inhibitor 1% TLC/UV
PE390	White Peony Extract	1.5% Albasides (HPLC),80% Glycosides (HPLC),40%, 50% peoniflorin
PE391	White Tea Extract	30~90% Polyphenols (UV-VIS)
PE392	White Willow Bark Extract	12~70% Sallcin (HPLC),4:1
PE393	Wild Yam Extract	8~20% Saponin on Diosgenin (HPLC),10:1
PE394	Woffberry P.E.	50% Polysaccharides (UV)
PE395	Wormwood Extract	4:1, 99% Artemisnin
Y		
PE396	Yeast extract	Beta-1, 3-Glucan 30~80%
PE397	Yohimbe Bark Extract	8~98% Yohimbines
Z		
PE398	Zeaxanthin	5~60% HPLC

PE399	Zedoray rhizome P.E.	20:1
PE400	Ziziphi Extract	2% Jujubiside (HPLC),4:1,6:1

KHCK Nutritional oil & Liquid List

Code	Commodity
Organic Nutritional Oil	
PE401	Organic Evening Primrose Oil (GLA8%, 9%, 10%)
PE402	Organic Flaxseed Oil (ARA 50%)
PE403	Organic Hemp Seed Oil (ARA20%,GLA1%)
PE404	Organic Pumpkin Seed Oil
PE405	Organic Purple Perilla Oil
PE406	Organic Sunflower Oil
PE407	Organic Borage Seed Oil (GLA18%, 20%, 22%)
Supercritical Carbon Dioxide Extraction Oil	
PE408	Angelica oil
PE409	Angelica polyclada notopterygium oil
PE410	Atractylis oil
PE411	Bark of official magnolia oil
PE412	Bergamot oil
PE413	Bitter almond oil
PE414	Black pepper oil
PE415	Black pepper oil
PE416	Bupleurum oil
PE417	Cananga oil
PE418	Capsicum Cleoresin
PE419	Capsicum oil

PE420	Cardamom oil
PE421	Cassia bark oil
PE422	Cassia Oil
PE423	Castor oil
PE424	Celery seed oil
PE425	Chlorophyll
PE426	Citron oil
PE427	Clove bud oil
PE428	Coix seed oil
PE429	Cumin oil
PE430	Curcuma oil
PE431	Cyperus oil
PE432	Dahurian angelica oil
PE433	Dalbergia wood oil
PE434	Elecampane oil
PE435	Fennel oil
PE436	Fenugreek seed oil
PE437	Frankincense oil
PE438	Fruit of immature citron fruit of immature trifoliolate orange oil
PE439	Ganoderma spore oil
PE440	Garlic Oil
PE441	Geranium oil
PE442	Ginger oil
PE443	Grape Seed Oil
PE444	Grassleaved sweetflag oil
PE445	Heracleum hemsleyanum
PE446	Jasmine essential oil
PE447	Lagehead atractylodes oil
PE448	Lavender oil
PE449	Lemon oil
PE450	Ligusticum oil
PE451	Litsea cubeba oil
PE452	Mace oil
PE453	Magnolia Oil
PE454	Michelia alba flower oil
PE455	Myrrh oil
PE456	Oluem curcumae

PE457	Patchouli oil
PE458	Pepper oil
PE459	Pomegranate seed oil
PE460	Purple perilla oil
PE461	Rose oil
PE462	Seabuckthorn fruit / seed oil
PE463	Spidenard oil
PE464	Stantal oil
PE465	Star anise oil
PE466	Styrax oil
PE467	Tea tree oil
PE468	The phello den dron bark of seed oil
PE469	Wheat germ oil
PE470	Wild carrot seed oil
PE471	Zanthoxylum oil

Conventional oil & Liquid

PE472	Abies oil
PE473	Apricot Kernel Oil
PE474	Apricot water aqua armeniaca
PE475	Arnebia Oil (GLA 12%, STA 11%)
PE476	Bergamot oil
PE477	Black Currant Oil (GLA 11%, 14% & 15%)
PE478	Blumea oil
PE479	Camellia Oil (OA 78%)
PE480	Camphor oil
PE481	Cardamon oil
PE482	Cassia oil
PE483	Chrysoidine oil
PE484	Citionella oil
PE485	Clove oil
PE486	Common jasminorange oil
PE487	Cypress oil
PE488	Dried tangerine peel oil
PE489	Echium Oil (GLA 10%, STA 11%)
PE490	Eugenol
PE491	Everning primrose oil (GLA 8%, 9%, 10%)
PE492	Flaxseed Oil (ALA 50%)

PE493	Forsythia oil
PE494	Hemp seed oil
PE495	Herba elsholtziae oil
PE496	Jasmine essential oil
PE497	Lavender oil
PE498	Leaf of purple operilla oil
PE499	Lily magnolia oil
PE500	Litsea cubeba oil
PE501	Menthol
PE502	Natural camphor
PE503	Nepeta oil
PE504	Oleum anisi stellati oil
PE505	Oleum cinnamomi
PE506	Oleum eucalypti
PE507	Oleum pogostemonis
PE508	Oleum terebinthinae oil
PE509	Oleumocimi oil
PE510	Peppermint oil dementholized
PE511	Pomegranate seed oil
PE512	Prinsepia utilis Royle Extract
PE513	Pumpkin Seed Oil
PE514	Purple perilla oil
PE515	Rice bran oil
PE516	Red leaf of purple operilla oil
PE517	Rosemary oil
PE518	Safflower oil,
PE519	Southernwood oil
PE520	Spearmint oil
PE521	Sunflower Oil
PE522	Synthetic borneol
PE523	Tangerine oil
PE524	Tea oil
PE525	Thymol oil
PE526	Valerian oil
PE527	Vitex oil
PE528	Walnut Oil
PE529	Wintergreen oil



PE530

Zanthoxylum oil

KHCK Bio-tech Product List

Code	Commodity	Specification
PE531	Chondroitin sulfate	CAS No.: 9007-28-7
PE532	N-acetyl-D-glucosamine	99%
PE533	Kelp Polysaccharides	20%
PE534	O,N-CARBOXYMETHYL CHITOSAN	
PE535	Water-Soluble chitosan	
PE536	D-Glucosamine Hydrochloride	99%